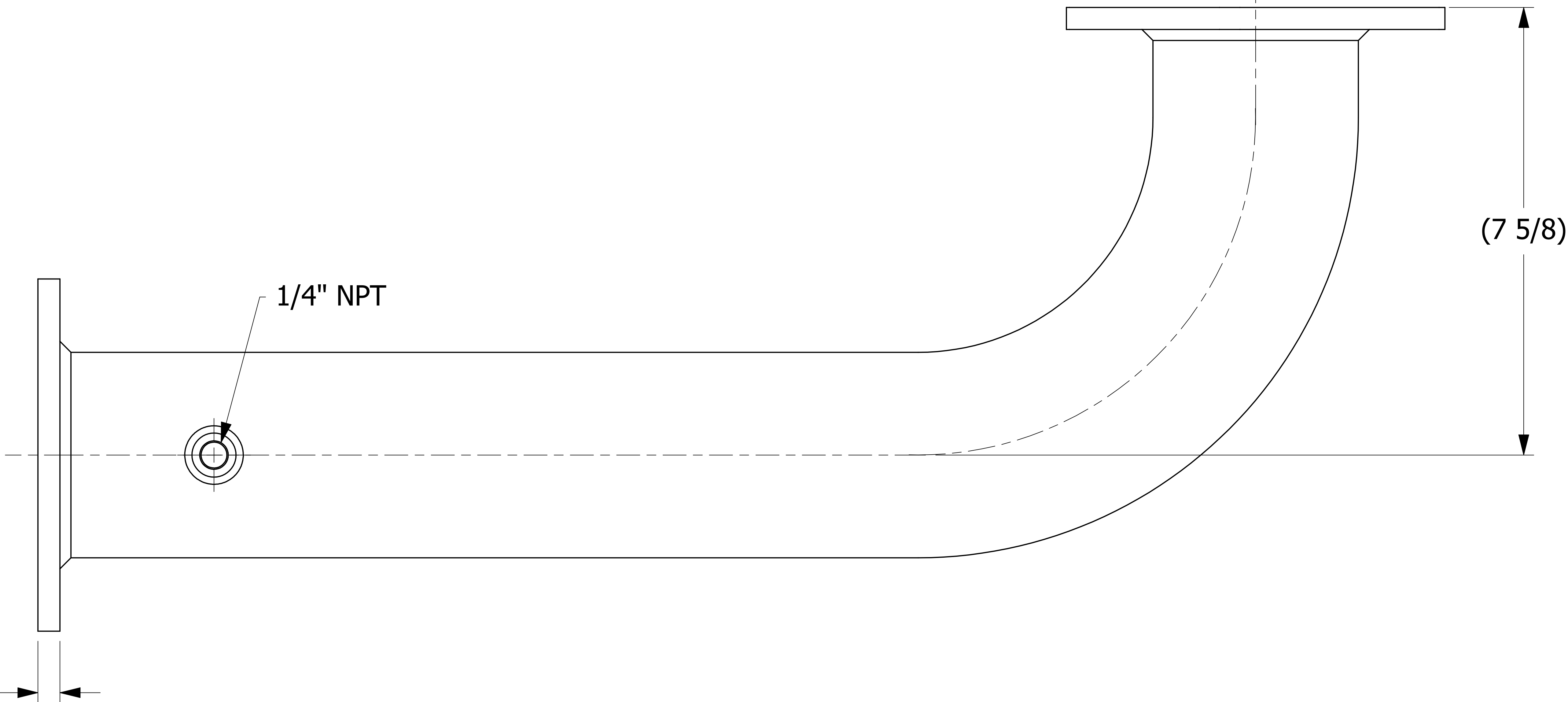
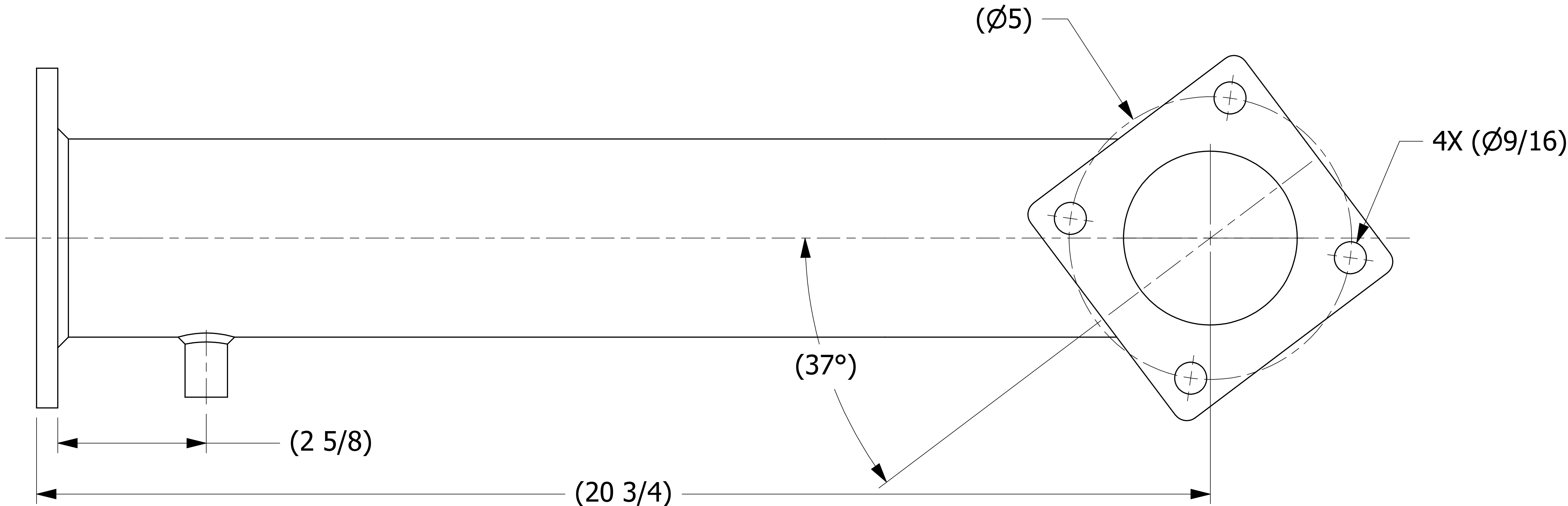
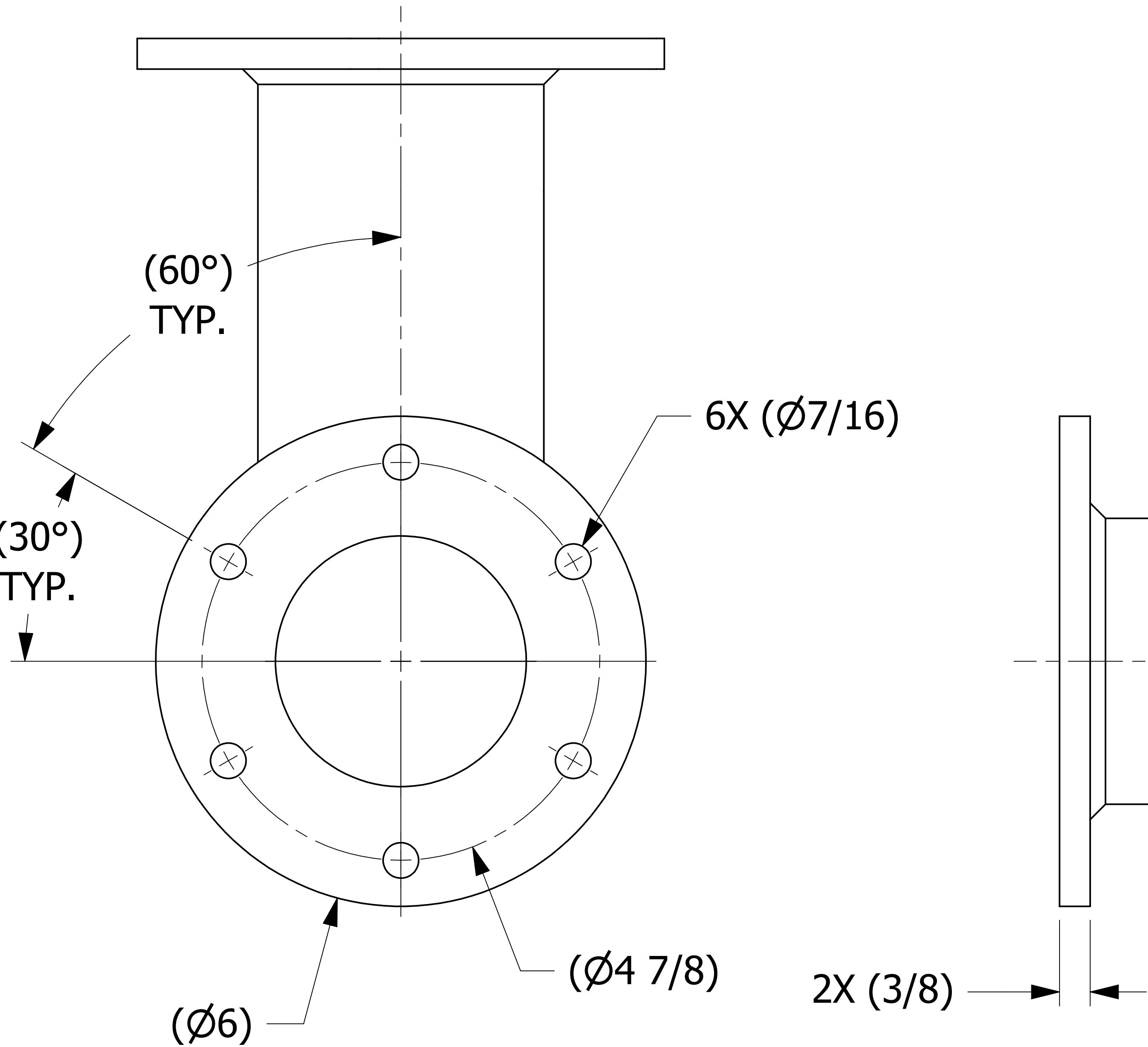
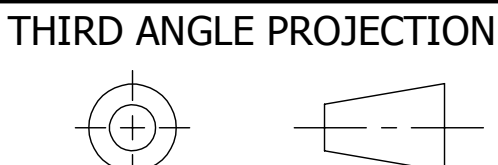


SALES DRAWING SALES DRAWING SALES DRAWING


SALES DRAWING SALES DRAWING SALES DRAWING



UNLESS OTHERWISE SPECIFIED  
DIMENSIONAL TOLERANCES  
FRACTIONAL:  $\pm 1/16$   
X.XX:  $\pm .03$   
X.XXX:  $\pm .015$   
ANGULAR:  $\pm 1^\circ$   
DEBURR ALL SHARP EDGES.  
ALL MACHINED SURFACES TO  
HAVE A 125 RMS FINISH UNLESS  
NOTED OTHERWISE.



DRAWN BY: WRB  
CHECKED BY: ACC  
PROTOTYPE BY: WRB  
PROTOTYPE DATE: 7/7/2005  
APPROVED FOR PRODUCTION BY: ACC  
PRODUCTION DATE: 9/11/2007

B	WEB	10-3-17	REPLACED PD3ASF03 & PD3ARF04 W/ PD3ASF04 & PD3ARF07, UPDATED BOM, NOTES, & DIMS	
A	CHL	9-11-07	NEW PART ADDED TO SYSTEM	
REV	BY	DATE	DESCRIPTION	
<div><div></div><div>SALCO PRODUCTS, INC.</div></div>				
PART NAME:				
PIPE ASSEMBLY				
MATERIAL:				
ALUMINUM				
PROJECT #:		050706		SHEET #:
		1 OF 1		SCALE:
				1:1
DRAWING #:		E20807		PART #:
		PD3A90F07		